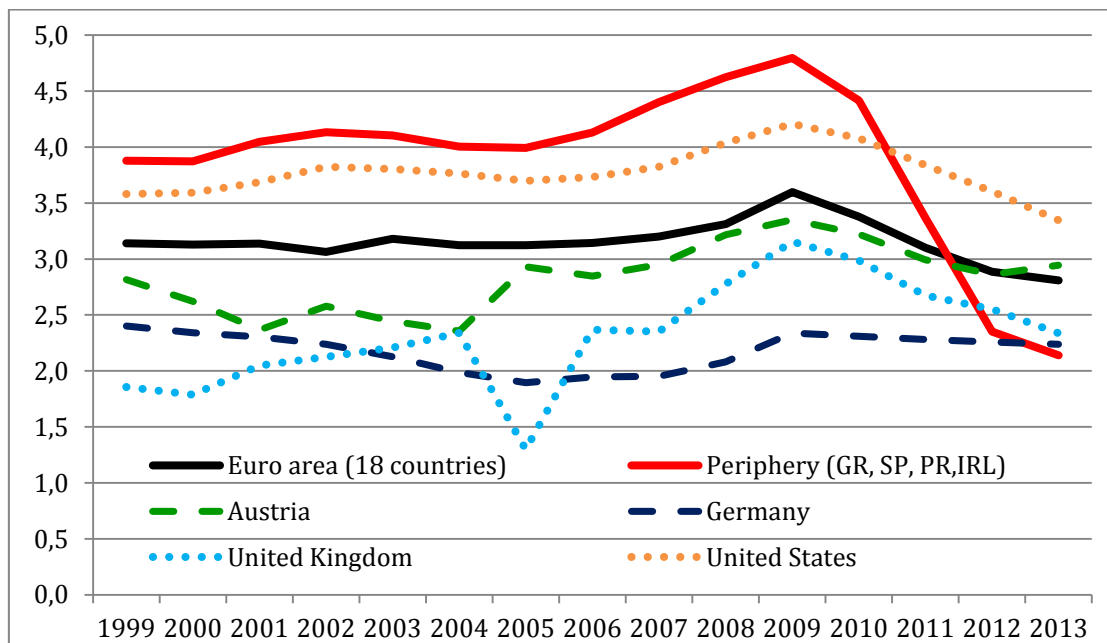


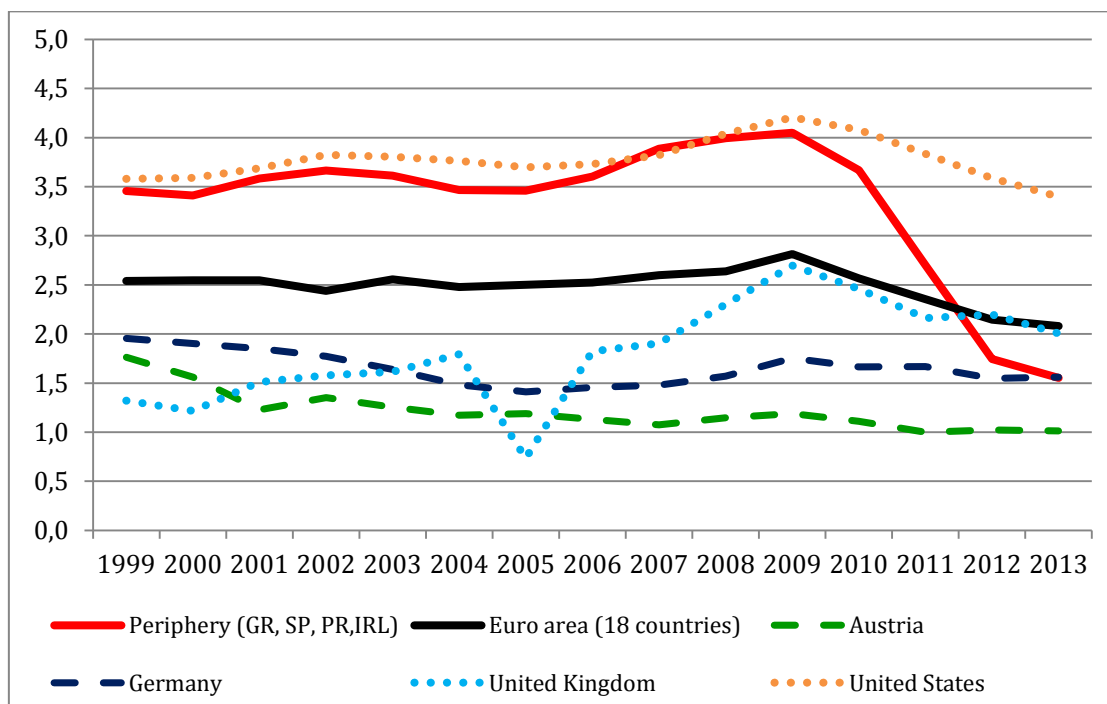
Appendix: Public investment under ESA 2010 and 1995 compared

Figure A1: General government gross fixed capital formation (ESA 2010) in the Euro area, the European Periphery and selected countries in per cent of GDP, 1999-2013



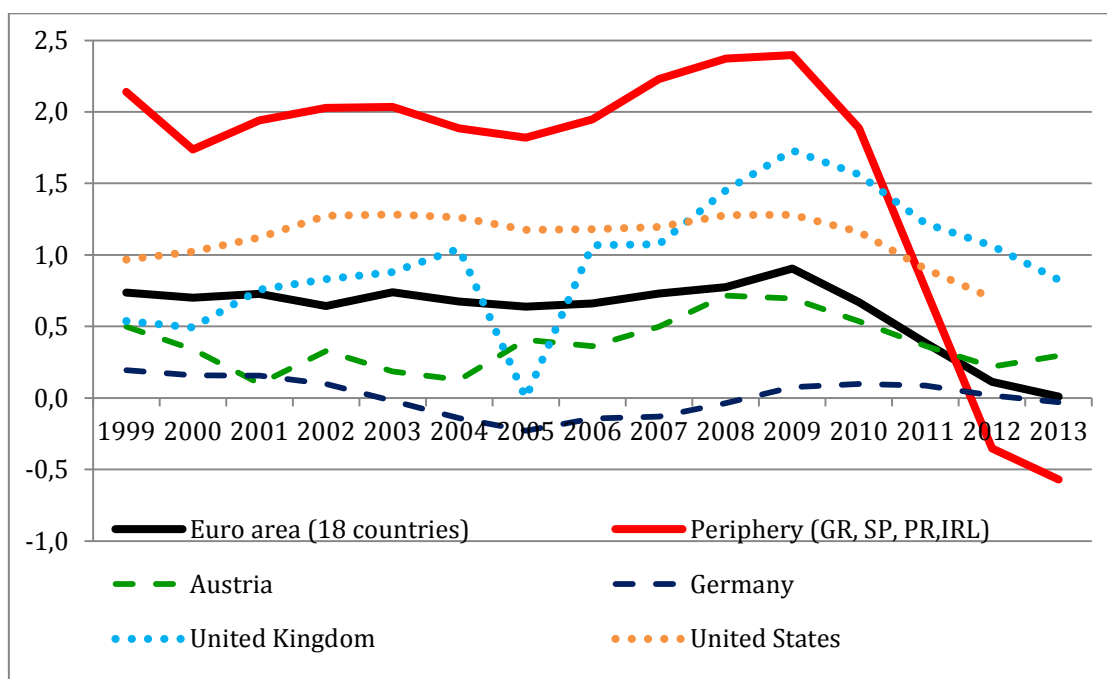
Source: European Commission (2014a); author's calculations.

Figure A2: General government gross fixed capital formation (ESA 1995) in the Euro area, the European Periphery and selected countries in per cent of GDP, 1999-2013



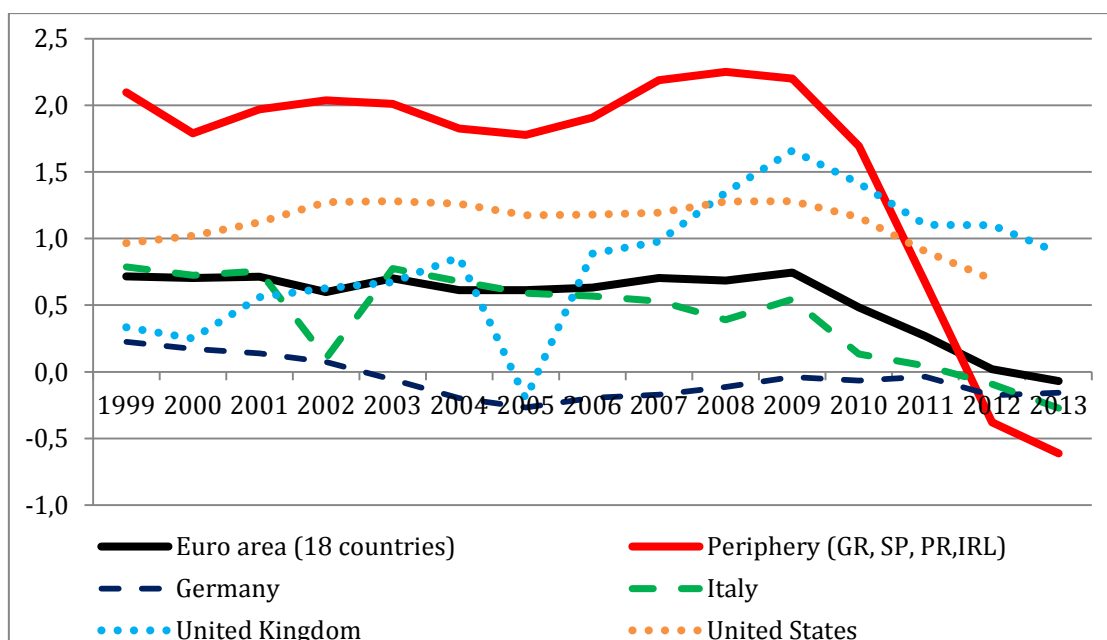
Source: European Commission (2014a); author's calculations.

Figure A3: General government net fixed capital formation (ESA 2010) in the Euro area, the European Periphery and selected countries in per cent of GDP, 1999-2013



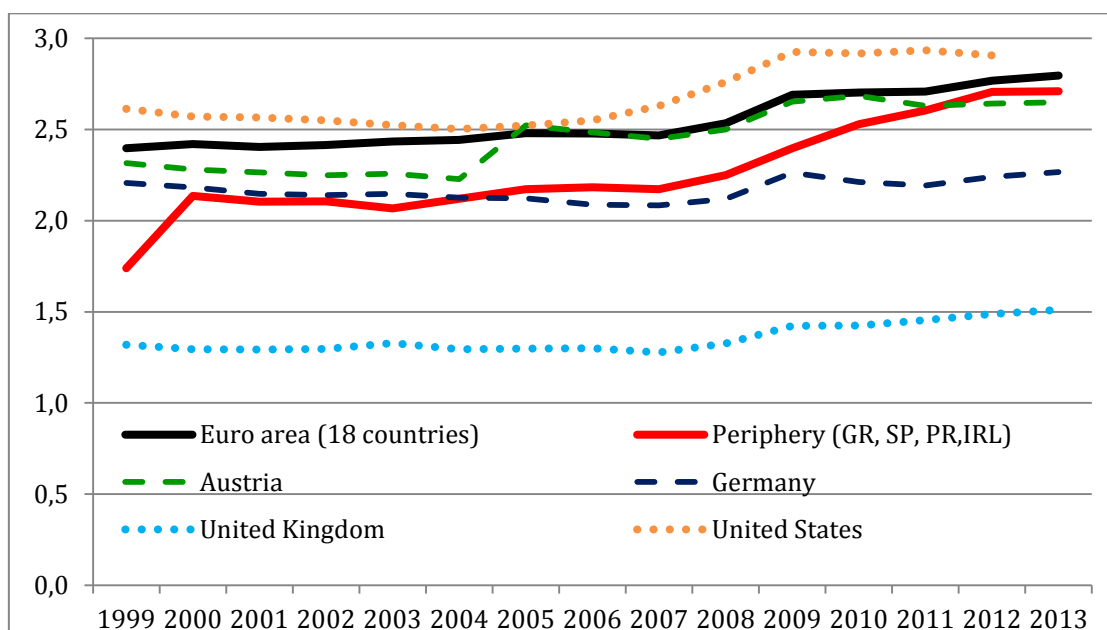
Source: European Commission (2014a); author's calculations.

Figure A4: General government net fixed capital formation (ESA 1995) in the Euro area, the European Periphery and selected countries in per cent of GDP, 1999-2013



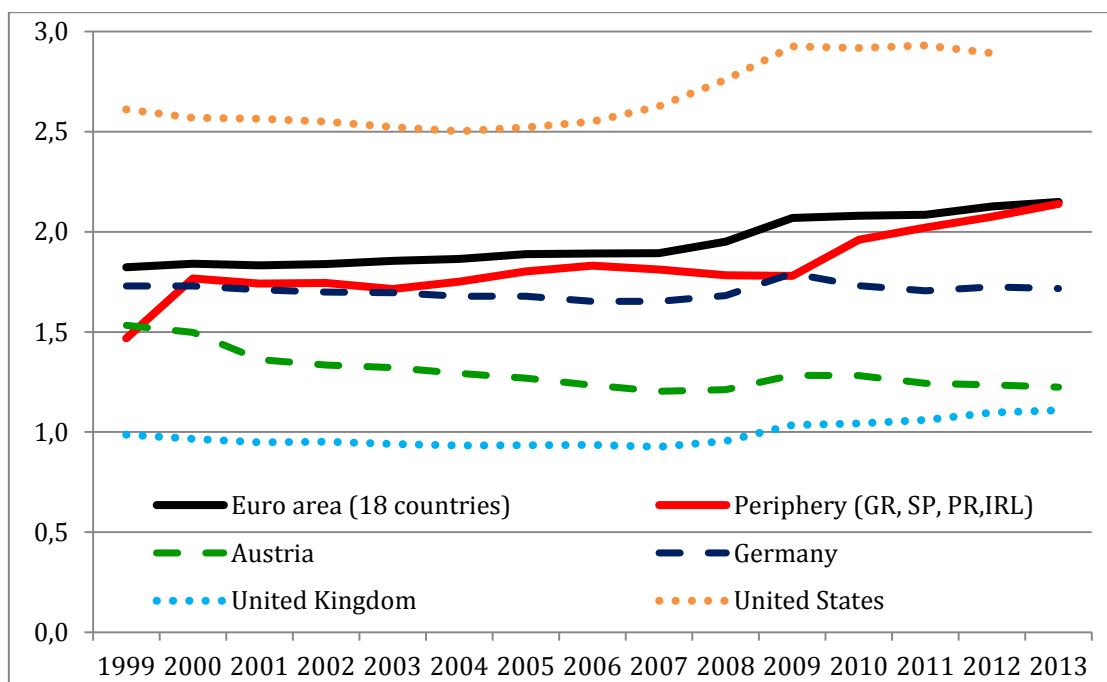
Source: European Commission (2014a); author's calculations.

Figure A5: General government consumption of fixed capital (ESA 2010) in the Euro area, the European Periphery and selected countries in per cent of GDP, 1999-2013



Source: European Commission (2014a); author's calculations.

Figure A6: General government consumption of fixed capital (ESA 1995) in the Euro area, the European Periphery and selected countries in per cent of GDP, 1999-2013



Source: European Commission (2014a); author's calculations.